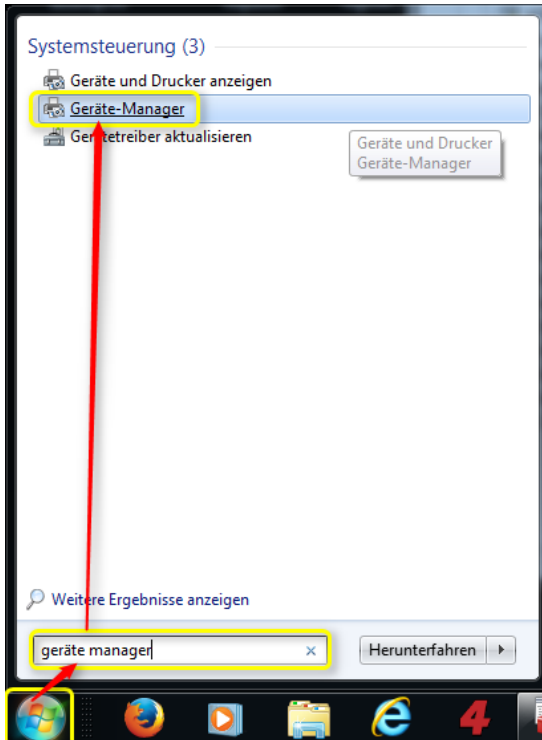


## Manual Phoenix USB Micro V2 interface driver installation

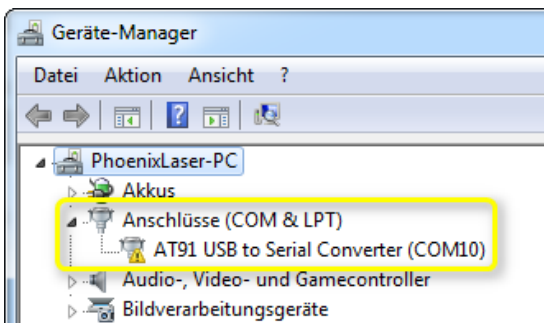
In rare cases there can be issues with the automatic driver installation in Windows. Please try to install the driver manually then. Connect the V2 interface and follow these steps:



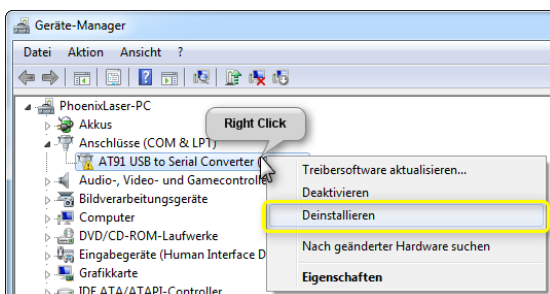
Click on the Windows start button and type „device manager“ into the search field.

Shortly after that, the entry “device manager” appears in the selection box above.

Click on the “device manager” entry to open it.

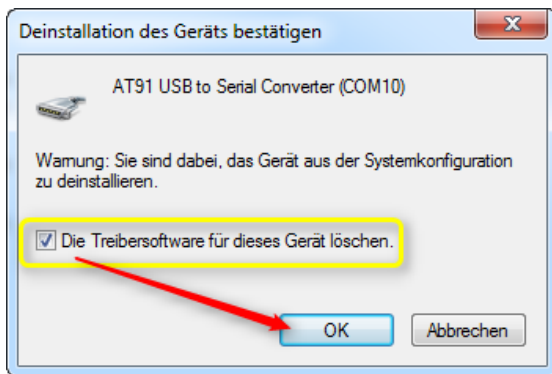


There at the branch „Connections (COM & LTP)“ you see an entry like “AT91 USB to Serial Converter (COMXX)”.



Click on that with the **right** mouse button.

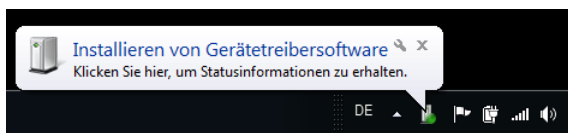
At the context menu please choose „Uninstall“.



Then tick the checkbox „Delete driver software from this device“. And click on OK.

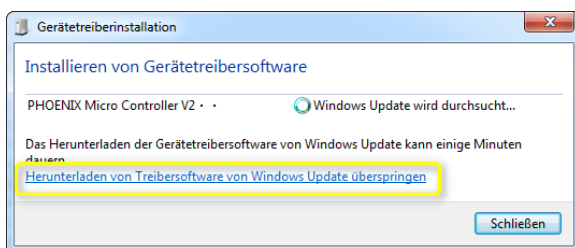
Then disconnect the USB connection of the interface to the PC and re-connect it.

**Attention:** The next two steps needs to be done quite quickly!

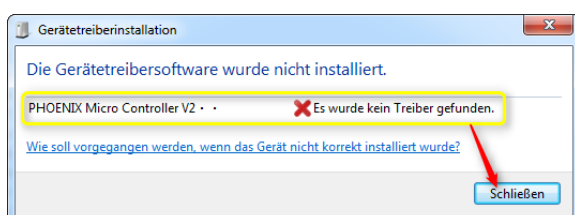


After re-connecting the interface with the PC, Windows shows a “Information ” tool tip at the bottom edge. **Quickly** click on that to display the “status information” for the interface driver installation.

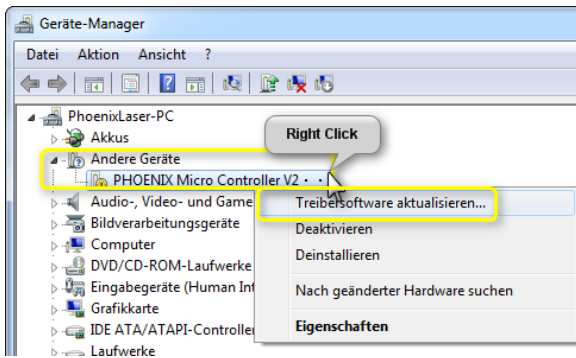
**Quick** again, you need to click on the link „Skip downloading of driver software from Windows Update“.



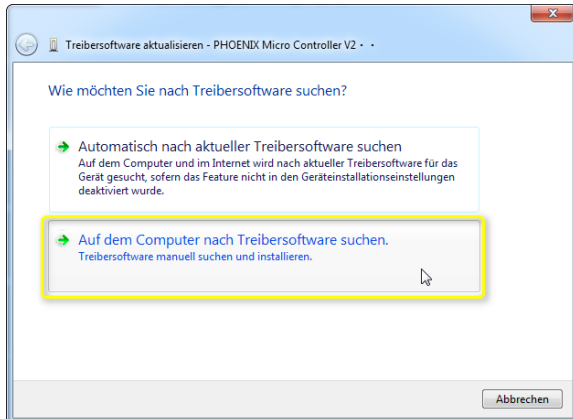
Accept the note for skipping the download of the driver software simply by clicking on the “Yes” button.



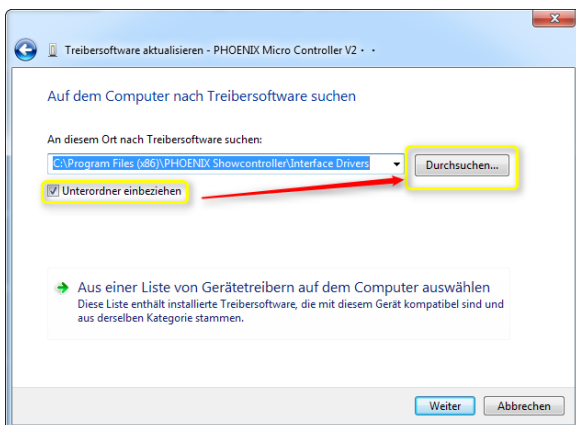
You get the notice then that no suitable driver has been found. That’s OK as we want to install the driver manually. Close that window by clicking on the “close” button.



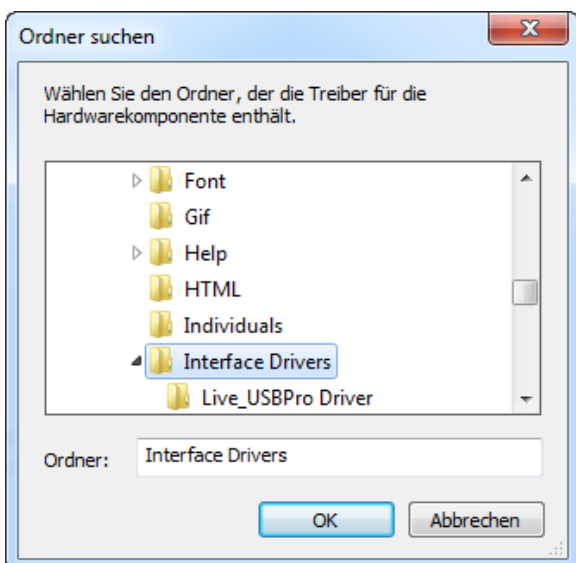
Now return to the „device manager“. There you see the entry „PHOENIX Micro Controller V2“ at the “other devices” branch. Click on that with the right mouse button and choose “Update driver” from the context menu.



In any case, at that „driver update“ window click on the lower choice “Search for driver software on that computer”.



Tick the checkbox „include subfolder“ at the next window and click on the “Browse” button then.

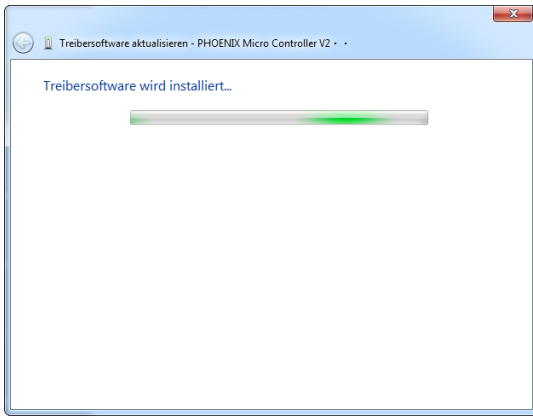


Navigate to the Phoenix installation directory with its sub-folder “Interface Drivers”.

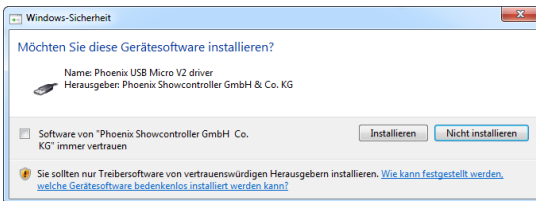
Generally it is located here:

“C:\Program files (x86)\Phoenix Showcontroller\Interface Drivers”

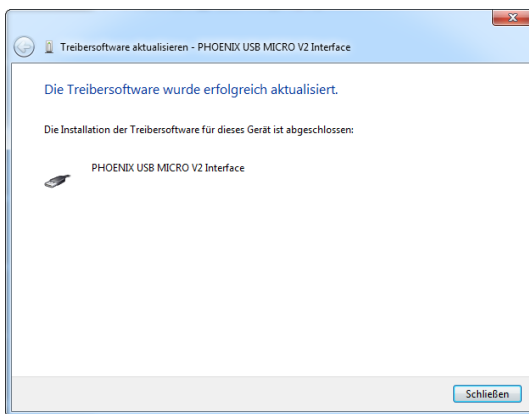
Confirm your selection with click on “OK”.



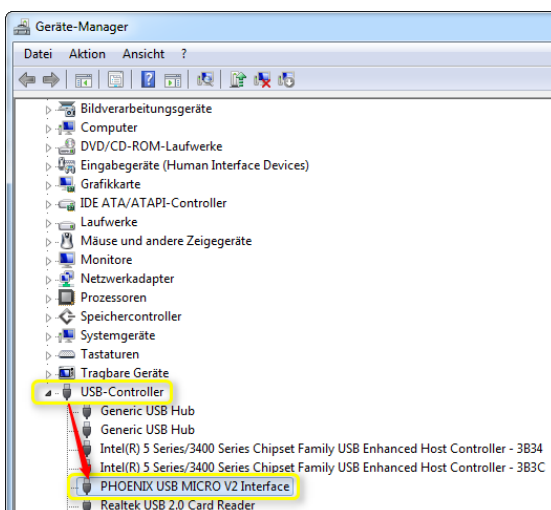
Windows then looks for the suitable driver in the selected directory.



If the driver has been found, you get a note for the driver installation of the signed driver. Click on the “install” button then.



After a short time, you see the message for a successful driver installation. Click on the button ”close” then.



At the device manager you see an entry “PHOENIX USB MICRO V2 interface” at the “USB-Controller” branch then.

Now the driver installation of the Phoenix USB Micro V2 interface has successfully finished and you can use it with your Phoenix software.