

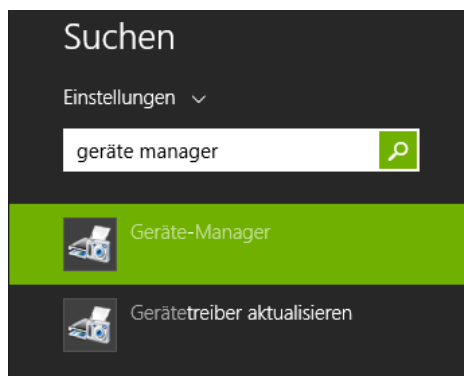
Manual Phoenix USB Micro V2 interface driver installation

In rare cases there can be issues with the automatic driver installation in Windows. Please try to install the driver manually then. Connect the V2 interface and follow these steps:

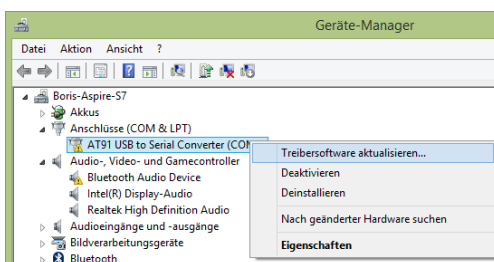


Move the mouse to the lower right corner. Wait until the charms menu comes up.

Navigate to “Search” and filter the search for “all” or “settings”.

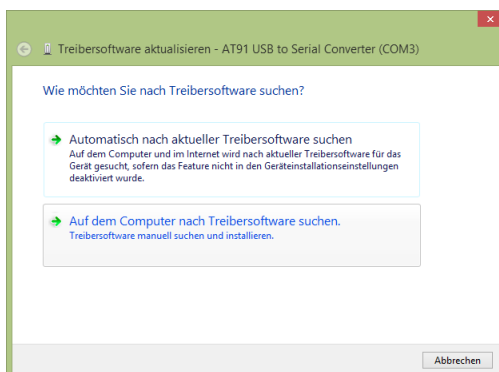


Type in “Device manager” and click on it as it appears in the selection list below

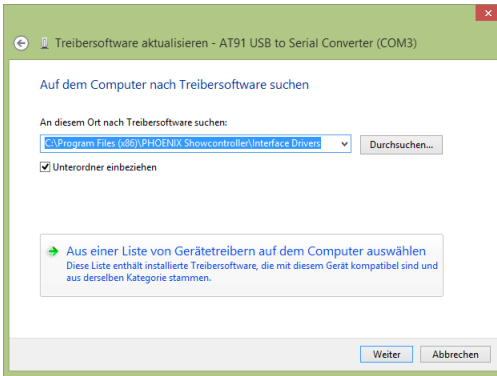


There at the branch „Connections (COM & LTP)“ you see an entry like “AT91 USB to Serial Converter (COMXX)”.

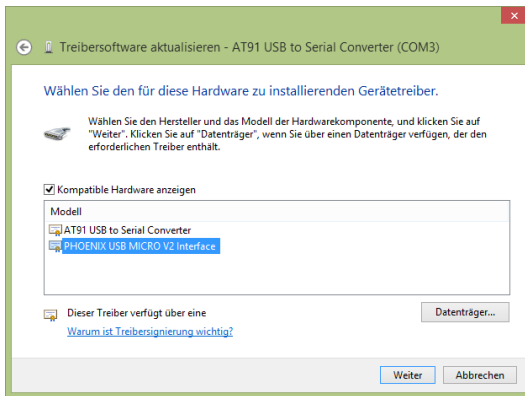
Click on that with the right mouse button and choose “Update driver” from the context menu.



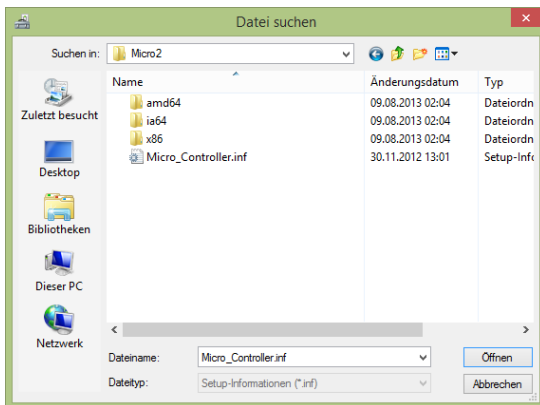
At the „driver update“ window click on the lower choice “Search for driver software on that computer”.



At the next window select the second (bottom) option “Choose from a list of device driver on that PC”.



At that window, click on the lower right “Volume” button.



Navigate to the path:

“C:\program files (x86)\Phoenix Showcontroller\Interface Drivers\Micro2”

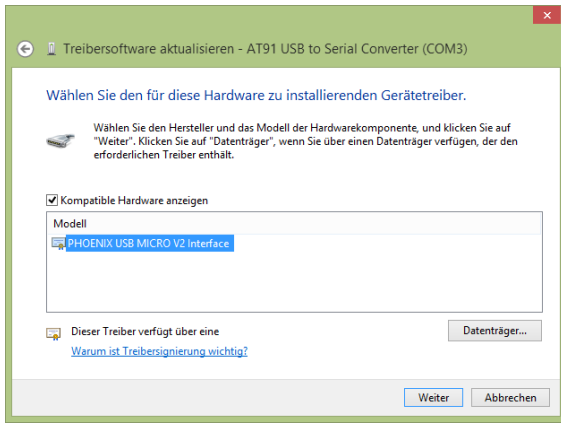
Where you will find a “Micro_Controller.inf” file.

Select that and click on the “Open” button.

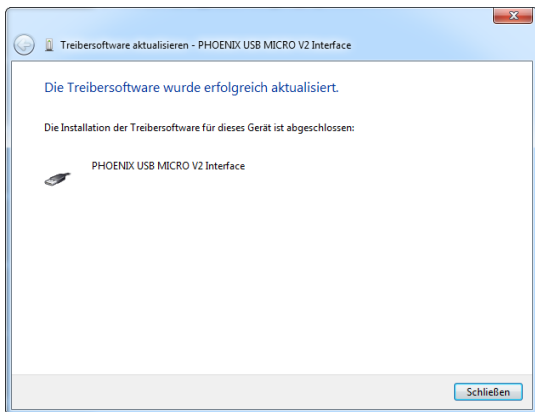
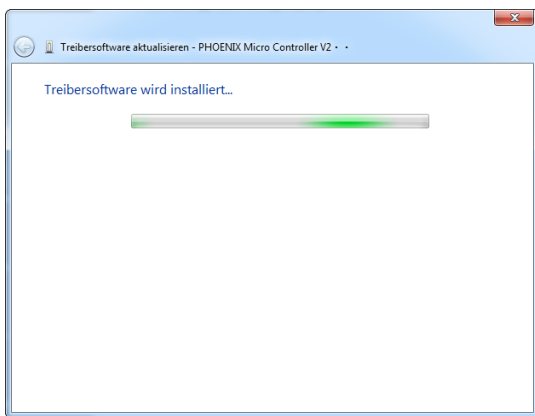
You will see a device named “PHOENIX USB MICRO V2 interface” in the list then.

Select that list entry and click on “Next”.

Windows then looks for the suitable driver in the selected directory.



After a short time, you see the message for a successful driver installation. Click on the button “close” then.



At the device manager you see an entry “PHOENIX USB MICRO V2 interface” at the “USB-Controller” branch then.

Now the driver installation of the Phoenix USB Micro V2 interface has successfully finished and you can use it with your Phoenix software.

